

# Reports and analyses

Helping to evaluate the 2016 Key Stage 2  
results

Identifying strengths and areas for development

# How to use the question level analyses

- The 'landing' page for QLA presents a cohort summary by assessment strand for each test paper
  - Differences between the school and national figures for each strand are displayed
- These summaries can be grouped by gender
- The 'landing' page contains links to further analyses by assessment sub-strand, test paper mark point and individual pupil analysis

[Context](#)[Absence](#)[Attainment](#)[Progress](#)[Closing the gaps](#)[QLA and optional tests](#)[My reports](#)[PDF documents](#)[Archive](#)Key Stage: Category: Keyword: 

Default to:

 Published data School's own data[Tree view](#)[Report list](#)

Context

Basic Characteristics

Basic Characteristics by NC Year Group

Census ward information

Ethnicity and First Language

[Library](#)[FAQ](#)

Selecting this option will open a new summary 'landing' page

A new 'landing' screen which summarises the performance of the cohort by strands for each paper. This displays English papers first (reading, EGPS, spelling then a combined mathematics followed by papers 1,2,3)

## All papers strand summary

<a href="#">Reading (click here for further analysis)</a>	Marks	School (%)	National (%)	Difference (%)
give / explain the meaning of words in context	10	39	58	-19
identify / explain how information / narrative content is related and contributes to meaning as a whole	1	62	65	-4
identify / explain how meaning is enhanced through choice of words and phrases	2	44	58	-14
make inferences from the text / explain and justify inferences with evidence from text	18	35	49	-13
predict what might happen from details stated and implied	3	31	38	-7
retrieve and record information / identify key details from fiction and non-fiction	15	54	67	-13
summarise main ideas from more than one paragraph	1	18	22	-4
<b>Grand Total</b>	<b>50</b>	<b>42</b>	<b>56</b>	<b>-13</b>

<a href="#">English grammar, punctuation &amp; spelling (click here for further analysis)</a>	Marks	School (%)	National (%)	Difference (%)
Combining words, phrases and clauses	6	56	69	-13
Functions of sentences	4	60	73	-13
Grammatical terms / word classes	15	57	72	-15
Punctuation	16	68	81	-13
Standard English and formality	1	58	81	-23
Verb forms, tense and consistency	8	44	62	-17
Vocabulary	5	53	65	-13
<b>Grand Total</b>	<b>55</b>	<b>57</b>	<b>71</b>	<b>-14</b>

Caution should be used when analysing strands which only have a small number of marks

Clicking on the paper names takes users to further analysis for that paper

<a href="#">Spelling only (click here for further analysis)</a>	Marks	School (%)	National (%)	Difference (%)
<b>Spelling</b>	<b>20</b>	<b>61</b>	<b>74</b>	<b>-14</b>

# RAISEonline

Reports   Data management   Administration

AA

Home > Reports

QLASummary -> KSX.8

Related Analyses: --Select-- -- none available --

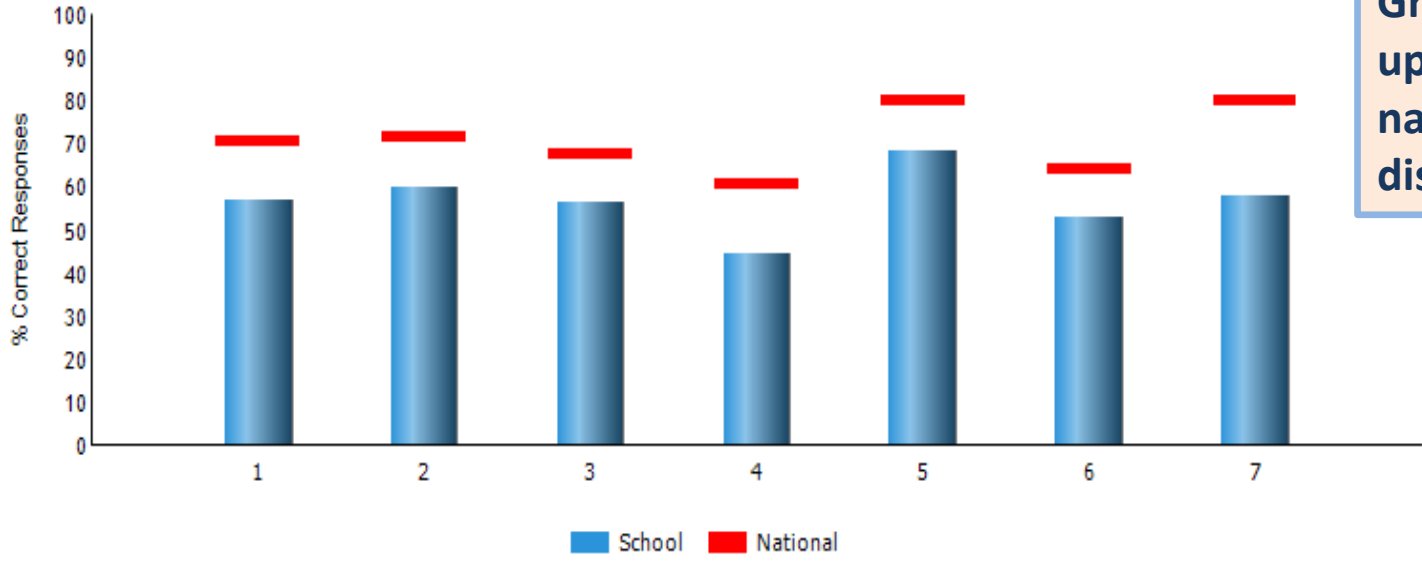
Subject: English (KS2) Test: --Select-- English grammar, punctuation and spelling (2016 Paper)

Set Filters

Graph Type: Bar Breakdown: Strand Gender: --Select--

How to Print

1 of 2 ? 100% Find | Next



Graphics have been updated with nationals now displayed as a line

Page 2 displays the strands within the test alongside the marks available, correct response of the cohort, correct response nationally and the difference between the two. Also displayed is the percentage attempted in the school and the difference between this and the national for each of the strands

Key	KS2 English grammar, punctuation and spelling Strand	Marks	% Correct Response	% National	% Difference from National	% Attempted School	% Difference from National
1	Grammatical terms / word classes	15	57	72	-15	100	2
2	Functions of sentences	4	53	73	-20	100	1
3	Combining words, phrases and clauses	6	56	69	-13	99	0
4	Verb forms, tense and consistency	8	59	62	-3	99	0
5	Punctuation	16	54	81	-27	100	1
6	Vocabulary	5	56	65	-9	99	3
7	Standard English and formality	1	64	81	-17	100	0

Clicking on the breakdown options allows you to look at sub-strand as well as strand

# RAISEonline

Reports   Data management   Administration

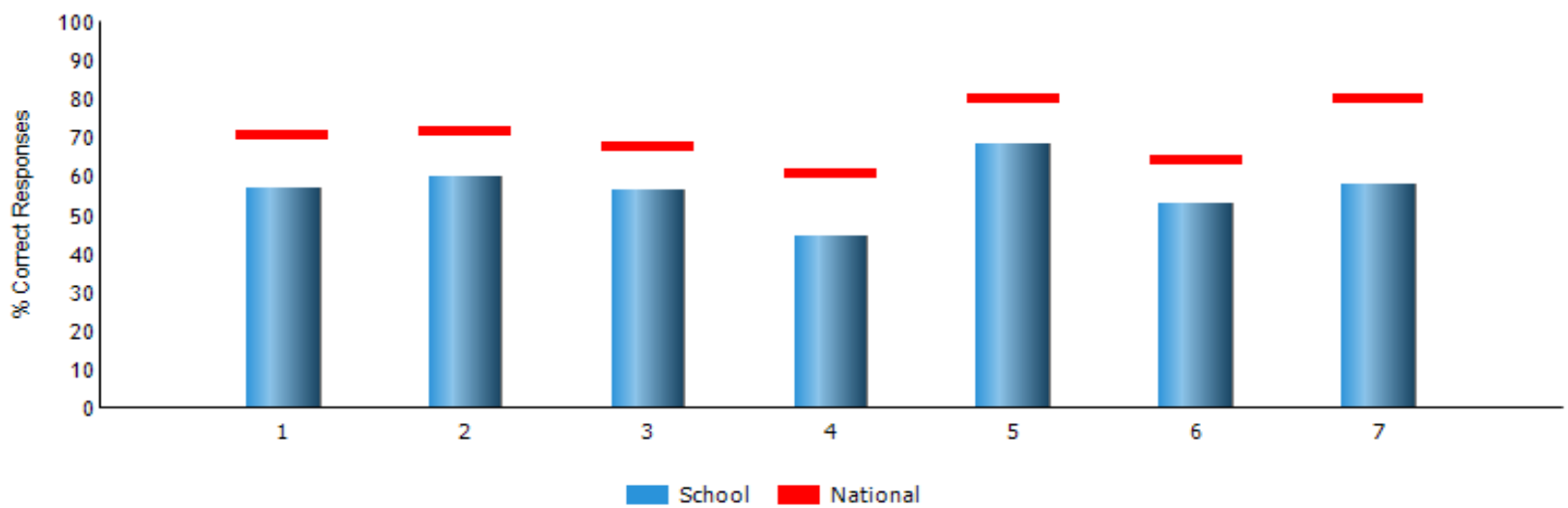
Home > Reports  
QLASummary -> KSX.8

Related Analyses: --Select--   -- none available --

Subject: English (KS2)   Test: --Select-- English grammar, punctuation and spelling (2016 Paper)

Graph Type: Bar   Breakdown: Strand   Gender: --Select--

1 of 2 ?   100%   Find | Next



# Pupil lists and individual reports

- Pupil reports are accessed through the 'related' analyses drop down menus.
- Accessing a test paper pupil list report will show the performance of pupils in each assessment strand relative to national figures
  - Pupil lists can be filtered for different groups
- Clicking on an assessment strand within a pupil list will generate a test paper report for the selected individual pupil



Related analysis allows you to navigate to other reports (eg QLA pupil list or QLA markpoint). Clicking on pupil list takes you to the following report

# RAISEonline

Reports   Data management   Administration   AA

Home > Reports

QLASummary -> KSX.8

Related Analyses:

- QLA Pupil List
- QLA Mark Point

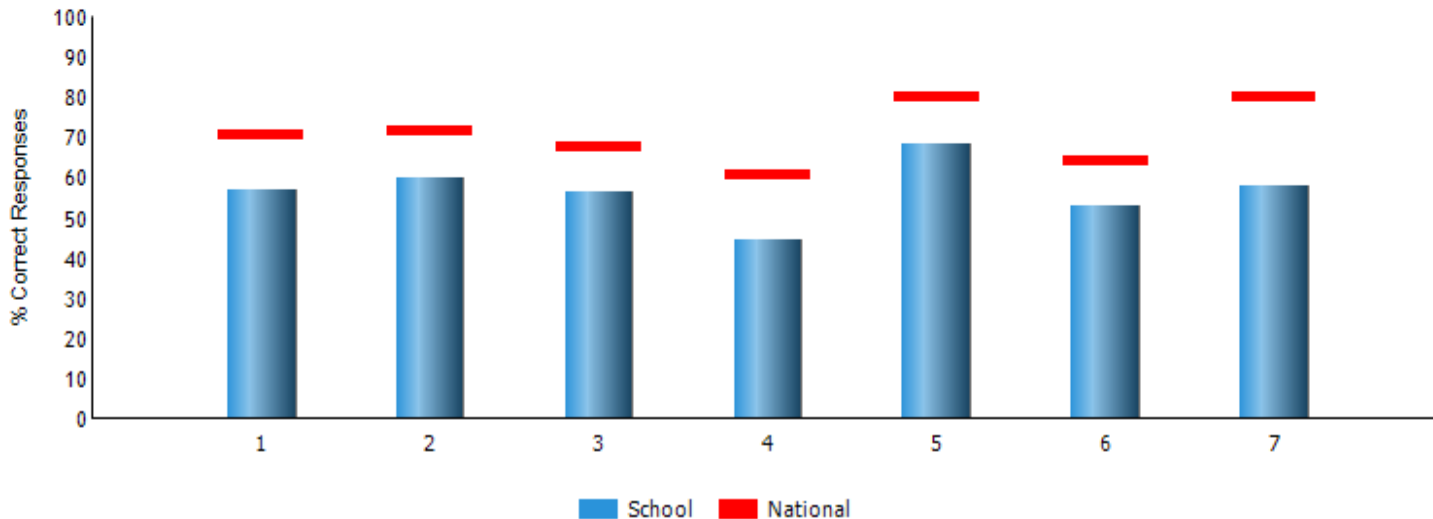
Subject:

Graph Type:  Breakdown:  Gender:

Set Filters

How to Print

1 of 2 ? 100% Find | Next



# RAISEonline

Reports

Data management

Administration

[Home](#) > Reports

QLASummary -> KSX.8 -> QLA.PupilList

Related Analyses:

--Select--

-- none available --

Subject: English (KS2)

Test Paper:

KS2 English grammar, punctuation and spelling (2016 Paper)

Graph Type:

-- none available --

Breakdown:

Strand

1 of 1

100%

Find | Next

## QLA Pupil List

This report lists the pupils alongside the percentage correct response for the test and for each strand. The national data is listed at the top. Clicking on a strand for a pupil will take you to the individual pupil report

### QLA Pupil List by Paper

#### KS2 English grammar, punctuation and spelling

% Correct

National		71.2	71.7	72.6	68.9	61.8	81.2	65.3	81.1
Surname	Forename	Overall	Strand 1	Strand 2	Strand 3	Strand 4	Strand 5	Strand 6	Strand 7
Smith	Andrew	95.9	100.0	75.0	100.0	87.5	93.3	100.0	100.0
Jones	Rob	24.0	26.7	0.0	16.7	25.0	12.5	40.0	100.0
Pearce	Jenny	100.0	100.0	100.0	100.0	100.0	100.0	100.0	100.0
Hamilton	Naomi	92.0	93.3	100.0	100.0	100.0	81.3	100.0	100.0

[Terms and conditions](#)

[Contact us](#)

[Latest news](#)

[FAQ](#)

[Site map](#)

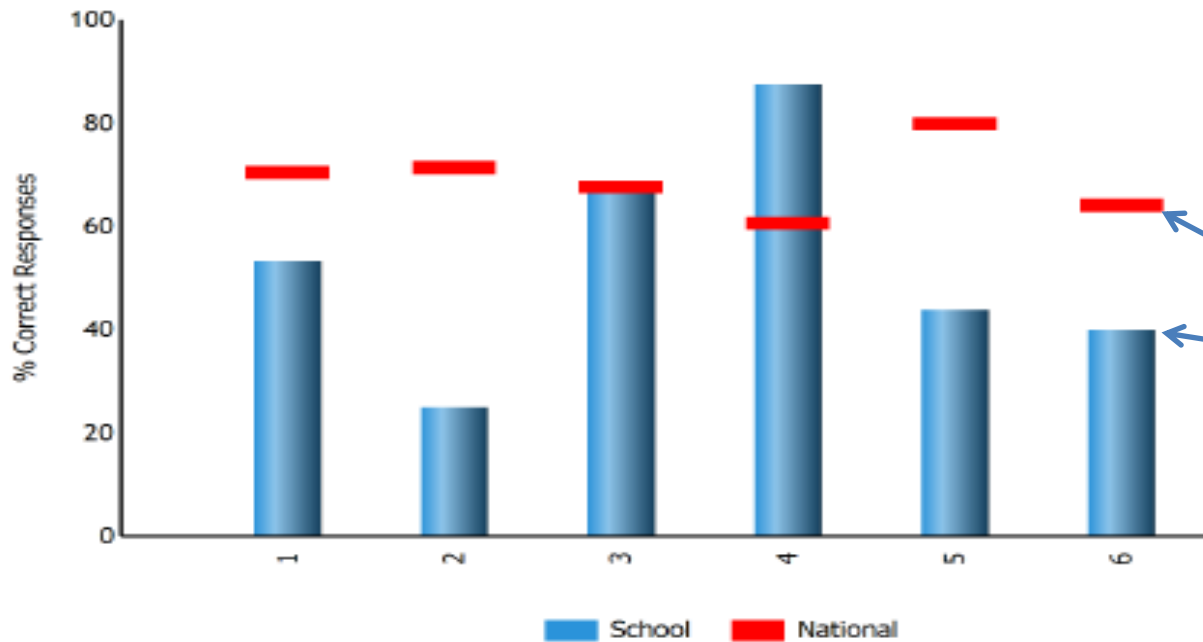
[Accessibility](#)

[Privacy policy](#)

# Key Stage 2, Question Level Analysis Pupil Level Report

This report shows question level results in key stage 2 English in 2016 for **Andrew Smith**

Percentage of correct responses per Strand for test KS2 English grammar, punctuation and spelling in 2016



Pupil data is displayed against the national data for each strand. This data is then displayed under the graph in tabular format. Users can choose a bar chart or a radar chart by selecting 'graph type'

## Pupil details:-

Name	Andrew Smith
Date Of Birth	Thursday 25 November 2004
Gender	Male

# RAISEonline

Users can select a different subject or a different paper

Reports   Data management   Administration

Home > Reports  
QLASummary -> KSX.8 -> QLA.MarkPoint.KS2 -> KSX.8

Related Analyses: --Select--   -- none available --

Subject: English (KS2)

Test Paper:

- All Papers (2016 Papers)
- KS2 English grammar, punctuation and spelling (2016 Paper)
- KS2 Reading (2016 Paper)
- KS2 English grammar, punctuation and spelling (spelling section) (2016 Paper)

Graph Type: Bar

Breakdown: Strand

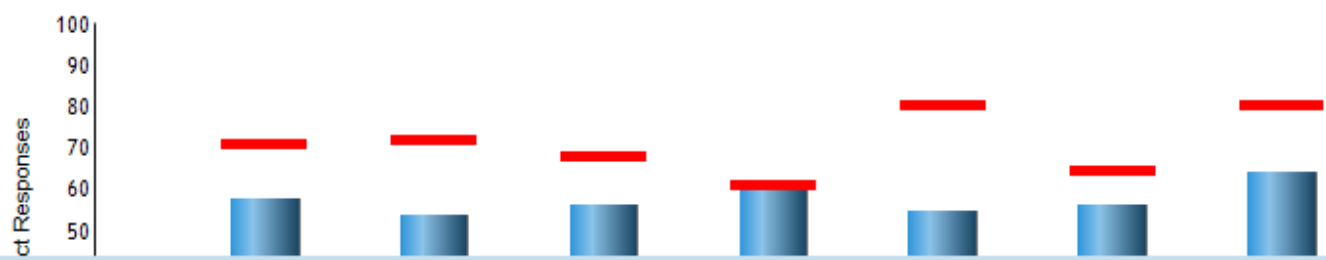
Set Filters

How to Print

1 of 2 ? 100% Find | Next

## Key stage 2 question level analysis summary for English in 2016

Percentage of correct responses per Strand for test KS2 English grammar, punctuation and spelling in 2016



# Mark point analyses

- Test paper mark point and pupil reports are accessed through the 'related' analyses drop down menus.
- Accessing the test paper mark point report shows the performance of the cohort in each question relative to the national figures
  - Mark point reports can be filtered for different groups
  - Clicking on a question/item number within the report will reveal the actual test question

Clicking on QLA markpoint will take you to the following report

# RAISEonline

Reports Data management Administration AA

Home > Reports

QLASummary -> KSX.8 -> QLA.MarkPoint.KS2 -> KSX.8

Related Analyses:

--Select--

-- none available --

Subject: English

QLA Pupil List  
QLA Mark Point

Test Paper: KS2 Reading (2016 Paper)

Set Filters

Graph Type: Bar

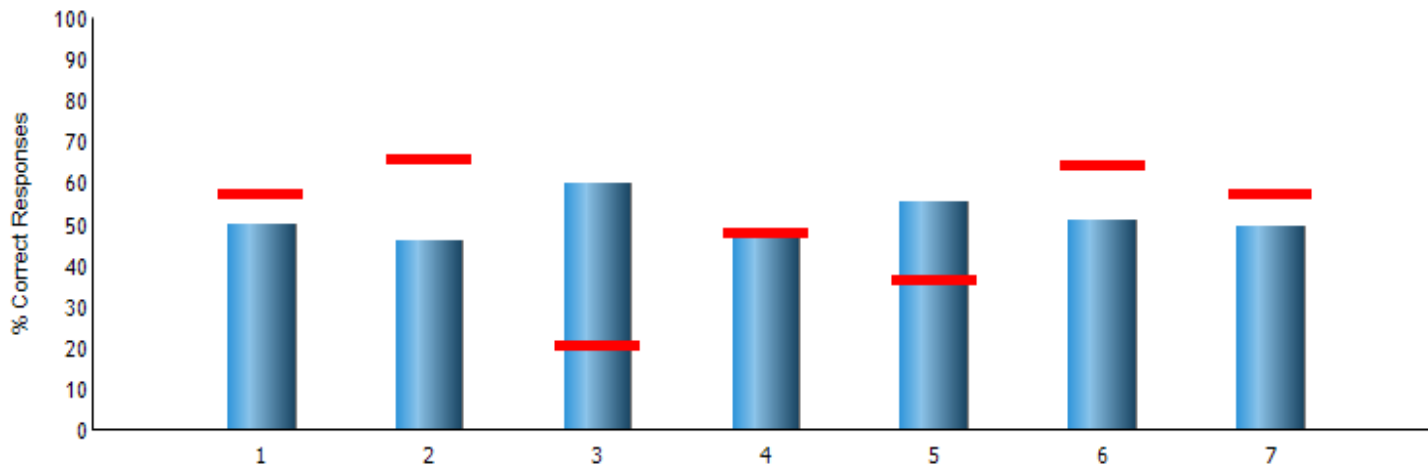
Breakdown: Strand

Gender: --Select--

How to Print

1 of 2 ? 100% Find | Next

Percentage of correct responses per Strand for test KS2 Reading in 2016



Clicking on the next page takes you to a breakdown within a table

# RAISEonline

Reports

Data management

Administration

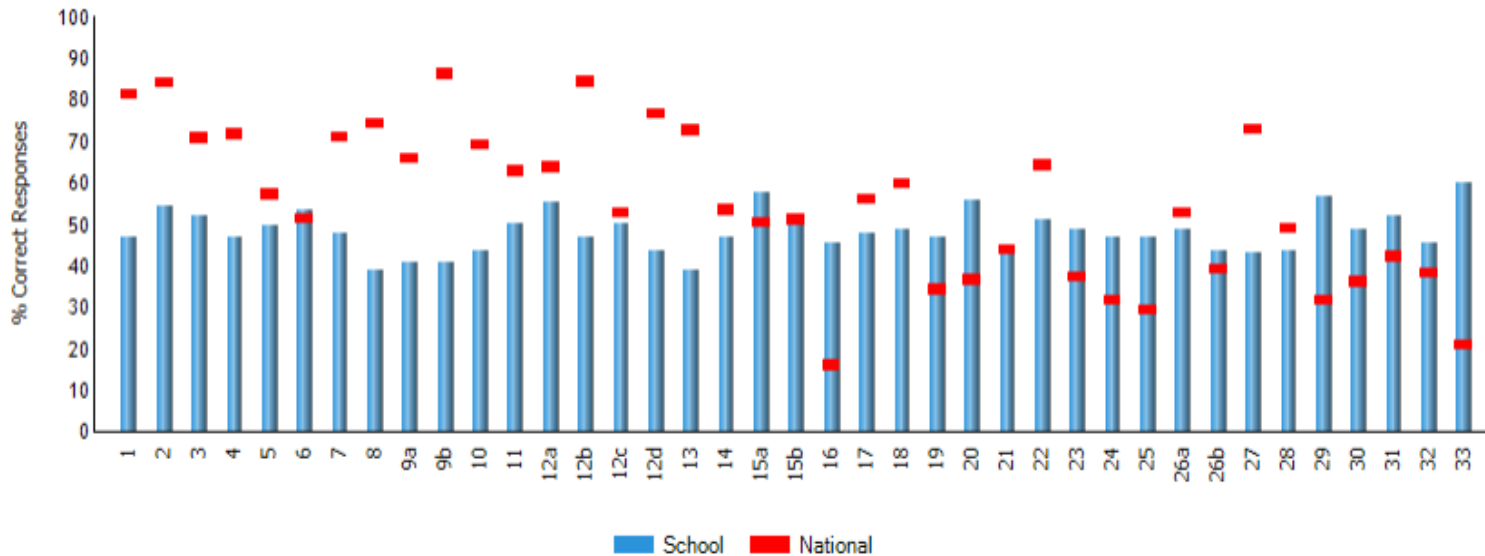
A

[Home](#) > Reports

QLASummary -> KSX.8 -> QLA.MarkPoint.KS2 -> KSX.8 -> QLA.MarkPoint.KS2

1 of 2 ? 100% Find | Next

Percentage of correct responses per Mark Point for test KS2 Reading in 2016



The percentage correct response of the cohort is displayed for each question/item alongside the national data with a difference between the two. These can be sorted, in the example here we will sort by the difference from national

# RAISEonline

Reports   Data management   Administration   AA

Home > Reports

QLASummary -> KSX.8 -> QLA.MarkPoint.KS2 -> KSX.8 -> QLA.MarkPoint.KS2

Related Analyses: --Select-- -- none available --

Subject: English (KS2) Test Paper: KS2 Reading (2016 Paper)

Set Filters

Graph Type: Bar Breakdown: Mark Point Gender: --Select--

How to Print

2 of 3 ? 100% Find | Next

## QLA Mark Point

KS2 Reading	Marks	% Correct response	% National	% Difference from national	% Attempted	% Difference from national
-------------	-------	--------------------	------------	----------------------------	-------------	----------------------------

Mark Point

1	1	47	82	-35	100	4
2	1	54	85	-31	98	-2
3	1	52	72	-20	100	2
4	1	47	73	-26	100	2



The data is now sorted by the 'difference from the national'. In this example question 9b has the biggest difference to the national, clicking on it reveals the question

# RAISEonline

Reports

Data management

Administration

A

Home > Reports

QLASummary -> KSX.8 -> QLA.MarkPoint.KS2 -> KSX.8 -> QLA.MarkPoint.KS2

2 of 3 ? 100% Find | Next

KS2 Reading ▲▼

Marks ▲▼

% Correct response ▲▼

% National ▲▼

% Difference from national ▼

% Attempted ▲▼

% Difference from national ▲▼

Mark Point

9b	1	40	87	-47	100	4
12b	1	47	85	-38	100	1
8	1	39	75	-37	100	0
1	1	47	82	-35	100	4
13	1	39	74	-35	100	4
12d	1	44	78	-34	100	1
27	1	43	74	-31	98	22
2	1	54	85	-31	98	-2
9a	1	40	67	-27	100	4

9

Look at the paragraph beginning: *Maria led Oliver...*

(a) Why did Oliver find it difficult to read the inscription on the monument?

---

1 mark

(b) What did he have to do in order to read the inscription?

---

1 mark